

www.rubig.com

RUBIG
DRIVING SUCCESS

Linchpins

Safety first



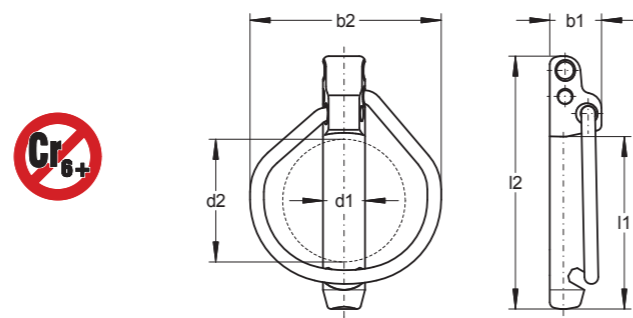


Safety Linchpin



- Drop forged steel shaft with safety-catch
- With third hole for fixing the safety chain
- Hardened to 1.200-1.400 N/mm²
- The spring is made of spring steel wire
- Shaft and spring galvanized and thick film passivated

The minimum values required by DIN 11023 are considerably exceeded by all RUBIG safety lynchpins.



Size	Order no.	d1	d2	l1	l2	b1	b2
4x27	02380000	3,8	20	24	39,5	11	29
5x32	02470000	4,7	25	29	48	11	34
6x27	02580000	5,8	20	25	40,5	11	29
6x42	02550000	5,5	32	42	63	13,5	49
8x42	02750000	7,5	32	42	63	13,5	49
8x62	02750200	7,5	53	62	83	20	69
10x45	02950000	9,5	32	45	66	14	49
10x55	02950200	9,5	45	55	77	14,5	58
10x65	02950300	9,5	53	65	85	21,5	67
10x100	02950600	9,5	80	100	123,5	25	100
12x45-	02110000	10,5	32	45	66	14	49
12x45+	02120000	11,5	32	45	66	14	49
12x55+	02120200	11,5	45	55	77	14,5	60
12x65	02120300	11,5	53	65	85	21,5	67
12x75	02120400	11,5	60	75	95	21,5	81
12x100	02120600	11,5	80	100	123,5	25	100
17x60	02160000	15,5	53	60	80	20	67,5
17x75	02160200	15,5	60	75	95	21,5	81
17x100	02160400	15,5	80	100	123,5	25	100
17x125	02160800	15,5	105	125	155	30	132

Changes can be found on our website: www.rubig.com

Linchpins

Trouble-free and highly versatile

Linchpins are used to join and secure mechanical implements and parts. Regarding this, the optimal design and quality of the pins is very important. They are forged - this allows both a wider selection of materials and many different possibilities of design while durability and safety are maximized by the innovative shape of the closing mechanism.

Linchpins are safety elements, therefore ongoing quality control in the production process is central to us. RUBIG lynchpins are available in more than 80 different types and sizes.

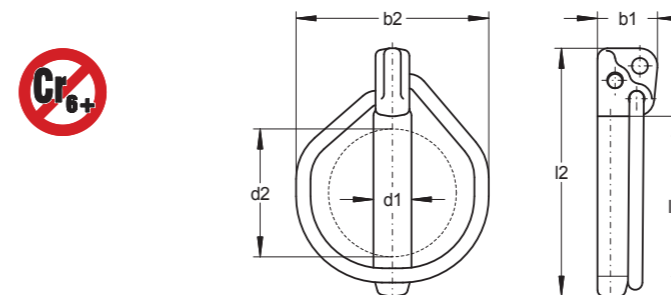
The right size for every application

DIN-Linchpin

- Forged steel shaft with third hole for fixing a safety chain
- The spring is made of spring steel wire
- Shaft and spring galvanized and thick film passivated



RUBIG DIN Linch Pins meet all dimensions and minimum values required by DIN 11023. Some sizes are also available in stainless steel.



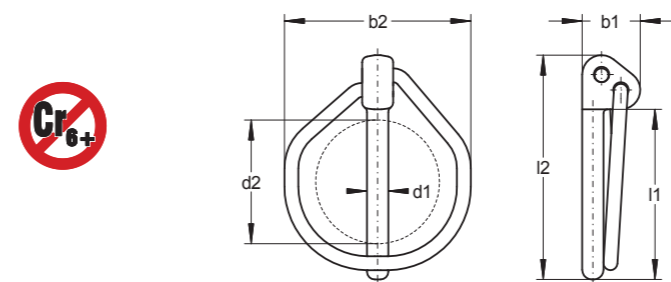
Size	Order no.	d1	d2	l1	l2	b1	b2
4x27	01382000	3,8	20	27	42	11	29
5x32	01472000	4,7	25	32	48	11	34
5x42	01472200	4,5	32	42	63	13,5	50
6x27	01582000	5,8	20	27	43	11	29
6x42	01552000	5,5	32	42	63	13,5	49
8x42	01752000	7,5	32	42	63	13,5	49
8x62	01752900	7,5	53	62	83	20	69
10x45	01952000	9,5	32	45	62	15	49
10x55	01952200	9,5	45	55	72	15	59
10x65	01952300	9,5	53	65	85	21,5	67
10x100	01952500	9,5	80	100	123,5	25	100
12x45-	01112000	10,5	32	45	62	15	50
12x45+	01122000	11,5	32	45	62	15	50
12x55+	01122200	11,5	45	55	72	15	59
12x65	01122300	11,5	53	65	85	21,5	67
12x75	01122400	11,5	60	75	95	21,5	81
12x100	01122500	11,5	80	100	123,5	25	100
17x60	01162000	15,5	53	60	80	20	67,5
17x75	01162200	15,5	60	75	95	21,5	81

Commercial Linchpin

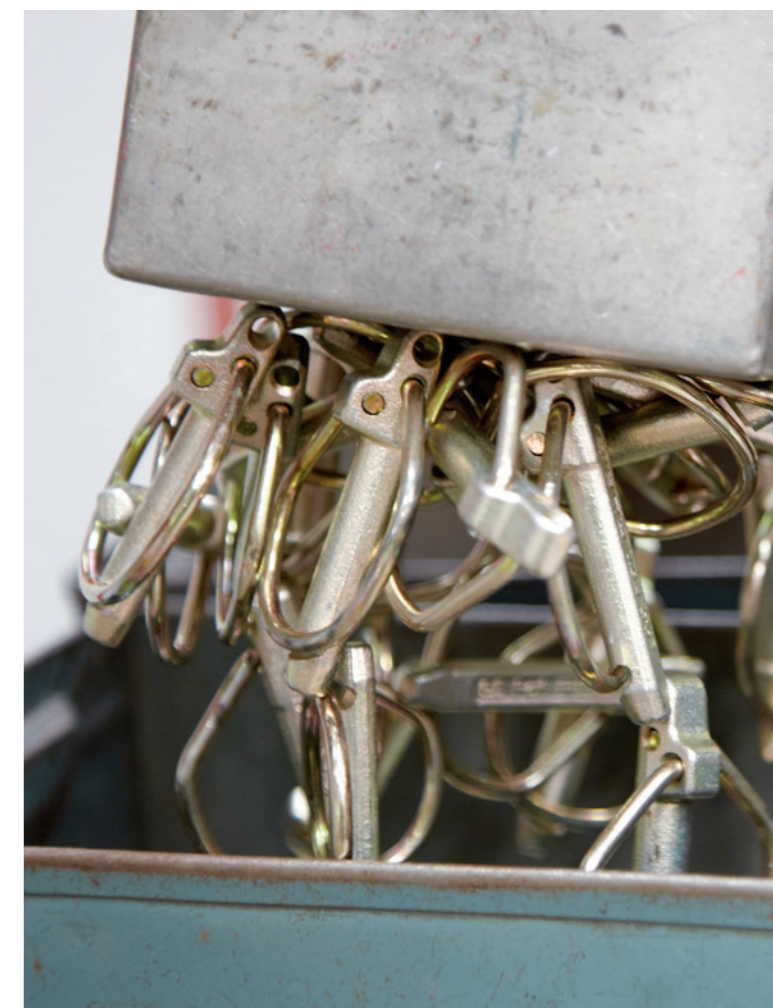
- Forged steel shaft
- The spring is made of spring steel wire
- Shaft and spring galvanized and thick film passivated.

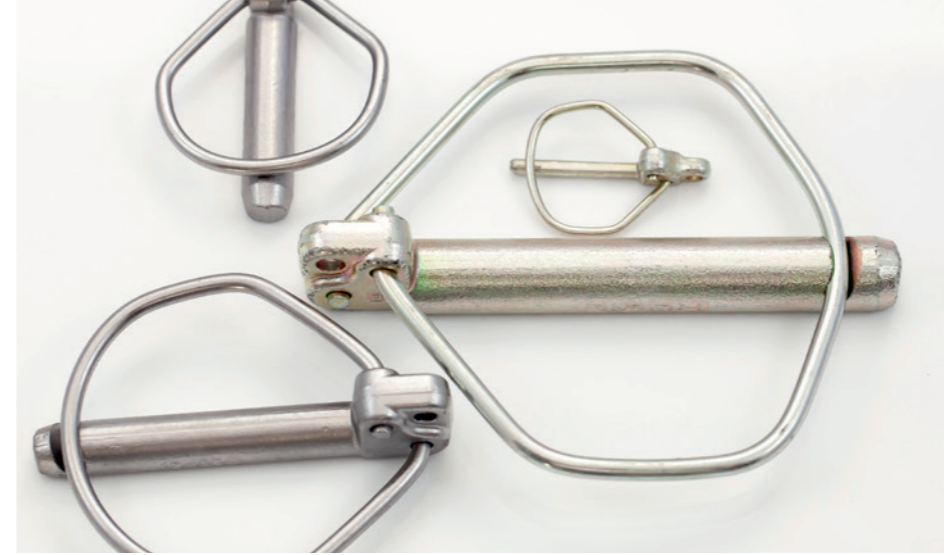


For lower operational demand.



Size	Order no.	d1	d2	l1	l2	b1	b2
5,5	03552000	5,5	32	44	59	15	49
7,5	03752000	7,5	32	44	59	15	49
9,5	03952000	9,5	32	44	59	15	49
10,5	03112000	10,5	32	44	59	15	49





Quick Action Coupler

- Forged steel shaft with third hole for fixing the safety chain
- Hardened to 1200-1400 N/mm²
- The spring is made of spring wire
- Shaft and spring galvanized and thick film passivated

Spare Part for Quick Action systems (type Walterscheid, CBM) and other special applications. OEM quality.



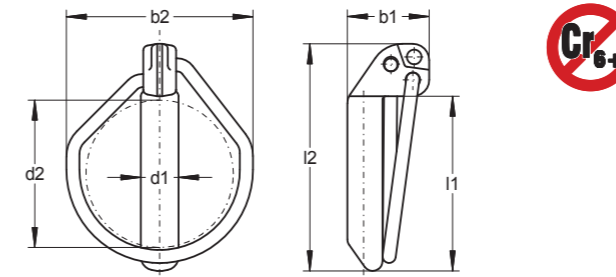
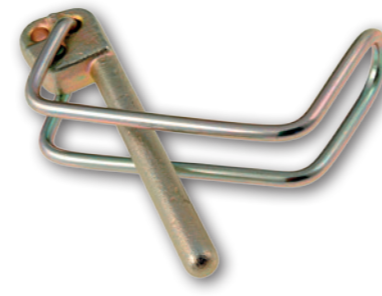
Tubeclip

- Forged steel shaft with third hole for fixing the safety chain
- Meets all dimensions and minimum values required by DIN 11023
- The spring is made of spring steel wire
- Shaft and spring galvanized and thick film passivated



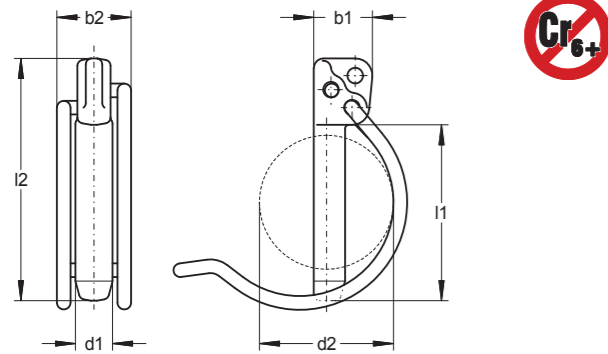
Formclip

- Forged steel shaft with third hole for fixing the safety chain
- Meets all dimensions and minimum values required by DIN 11023
- The rectangular spring is made of spring steel wire
- Shaft and spring galvanized thick film passivated



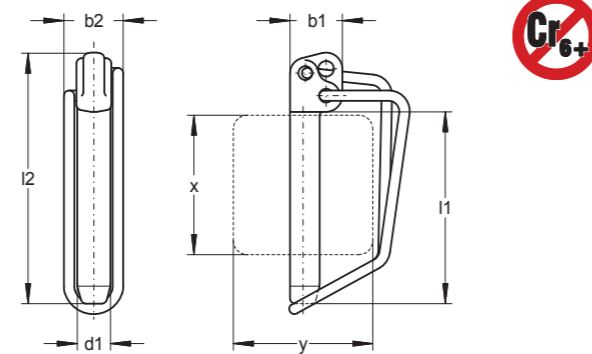
Size	Order no.	d1	d2	l1	l2	b1	b2
K II	01122700	11	48	52	68	25	58
K III	01162700	15,5	54	60	80	31	69

Some sizes are also available in stainless steel.



Size	Order no.	d1	d2	l1	l2	b1	b2
5x32	06472500	4,7	30	32	48	11	16
5x42	06472502	4,5	35	42	63	13,5	20
6x42	06552500	5,5	35	42	63	13,5	20
8x42	06752500	7,5	35	42	63	13,5	20
8x62	06752900	7,5	50	62	83	20	24
10x45	06952500	9,5	40	45	62	15	20
10x55	06952501	9,5	50	55	72	15	24
10x65	06952502	9,5	50	65	85	21,5	24
12x45-	06112500	10,5	40	45	62	15	20
12x45+	06122500	11,5	40	45	62	15	20
12x55+	06122501	11,5	50	55	72	15	24
12x65	06122502	11,5	50	65	85	21,5	24
12x75	06122504	11,5	65	75	95	21,5	25

Find all tables in IMPERIAL UNITS at our website: www.rubig.com

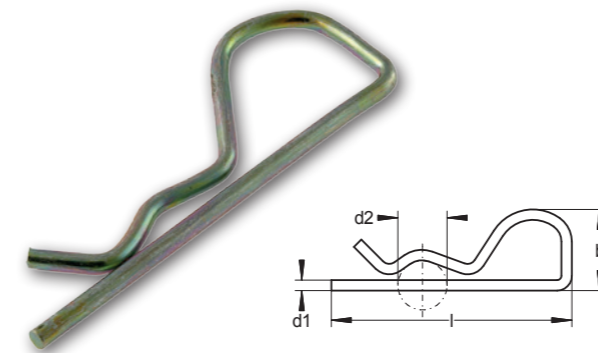


Size	Order no.	d1	x	y	l1	l2	b1	b2
6x42	06303055	5,5	30	30	42	63	13,5	18
8x42	06303075	7,5	30	30	42	63	13,5	18
8x62	06505075	7,5	50	50	62	83	20	19
10x45	06303095	9,5	30	30	45	62	15	18
10x55	06404095	9,5	40	40	55	72	15	19
10x65	06505095	9,5	50	50	65	85	21,5	21
10x100	06101000	9,5	75	65	100	124	25	22
12x45+	06303045	11,5	30	30	45	62	15	18
12x55+	06404012	11,5	40	40	55	72	15	19
12x65	06505012	11,5	50	50	65	85	21,5	21
12x75	06606012	11,5	60	60	75	95	21,5	22
12x100	06121000	11,5	75	65	100	124	25	23
12x100	06121001	11,5	90	55	100	124	25	22
17x75	06606016	15,5	60	60	75	95	21,5	23

R-Clip

- Made of spring steel
- R-Clips are galvanized and thick film passivated

The special shape of the R-Clip ensures easy handling and maximum "retention force".



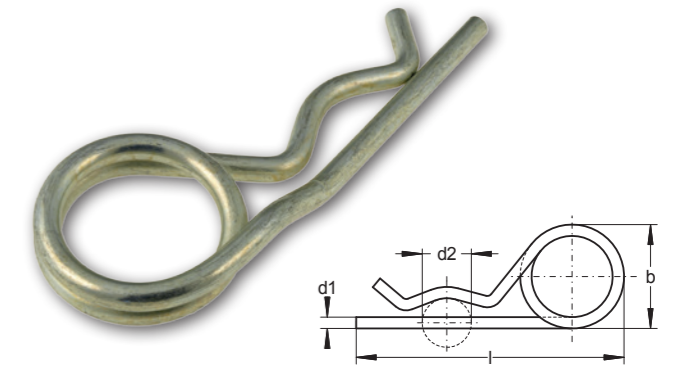
Size	Order no.	l	b	d2
2,5*	04252000	58	21	10 - 20
3,6*	04362000	83	29	20 - 30
4,5	04452000	105	41	25 - 40

* available in stainless steel

DIN R-Clip

- Form according to DIN 11024
- Made of spring steel
- Galvanized and yellow chromatised

The special shape of the R-Clip ensures easy handling and maximum "retention force".



Size	Order no.	d1	d2	l	b
2,5	04252801	2,25	9 - 11,2	54	25
3,2	04282801	2,8	11,2 - 14	61	26
4	04362801	3,6	14 - 20	78	27
5	04452801	4,5	20 - 26	97	34
6,3	04562801	5,6	26 - 34	115	36
7	04632801	6,3	34 - 45	146	42
8	04702801	7	45 - 56	172	44



INOX - Clip

- Forged steel shaft with third hole for fixing the safety chain
- Stainless steel: CrNi 18/8 (SAE 30303)

Resistant to aggressive media under certain conditions.



Accessories

- Safety chain G3 x 26 / 8 links approximately 200 mm with assembly ring ø 25 x 2,6mm
- Galvanized and thick film passivated
- Special parts on demand



Applications

3-point linkage

A typical application of linchpins is on tractors. This is by far the most common usage, setting very high requirements on holding forces. Especially here, RÜBIG products and their quality are playing a big role.

Circular self-cleaning harrow

Wherever implements need to be changed quickly, linchpins are particularly suitable because of their fast clamping mechanism.

Nut-locking device

Can be opened without tools or damage to equipment. This distinguishes it from other Linchpins as a replacement (backup) according to DIN 94 specifications.

Wheel protection

A design having the best price/performance ratio. Essential security requires a RÜBIG Linchpin.

Mobile cranes and construction machinery

require on many places, quick, safe and clean solutions. From outrigger plate to the swivel arm connector, from backhoe bucket to the counterweight attachment - everybody will find an appropriate solution among the approximately 150 RÜBIG Linchpin models of various sizes.

Formwork technology

Many of our Linchpins are used in the building industry, saving time and costs wherever scaffoldings and formworks are there.

Customer-oriented Solutions

Besides our excellent quality we also offer a large variety of different linchpins. Only a perfectly fitting linchpin can ensure optimum safety and functionality.

Furthermore, customers will be offered special designs with labels or logos on it.

The use of the pins is extremely simple and its uniqueness distinguishes it from all other products through the following advantages:

- Easy handling (no support tools needed)
- Time-saving
- Resistant to dirt and corrosion
- Straightforward (no-frills)
- Cost effective
- Industrially standardised parts

Hangers

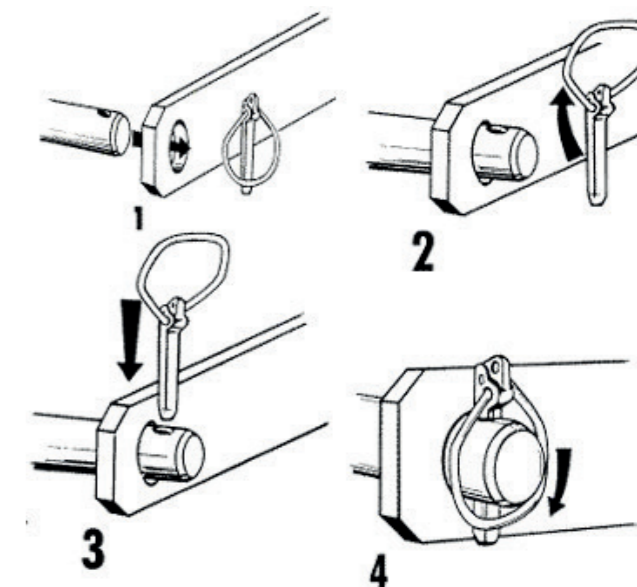
- Forged pin with third hole for fixing the safety cord (200mm)
- In accordance with DIN 11023
- Retaining spring 2.5Bx80
- Galvanised and passivated with a thick layer

More sizes available on request.



Special Linchpin

We are also able to provide special linch pins, which are made for special applications of our customers. It is also possible to forge the customer's logo on the linch pin.





RÜBIG
DRIVING SUCCESS

Technical details are subject to change. ©RÜBIG 2017

Franz RÜBIG & Söhne GmbH & Co KG

Mitterhoferstraße 17
4600 Wels
Austria

t +43 (0) 7242 / 47 135 0
f + 43 (0) 7242 / 47 135 2050
st.office@rubig.com